

I think it is a good idea to practice these exercises in ALL keys. Once you have played them up to 4 sharps and flats, you should be able to transpose them into the other keys.

It may be tricky and frustrating at first, but try to remember that it is not hard to play them; it's just something new, and with diligent practice you'll see great results! Remember to go slow at first.

Each of these studies can be broken down into more manageable chunks, and by listening whilst you practice, you'll hear the different exercises within each key.

It is a good idea to practice the exercises tongued, slurred, and also using jazz articulations.

On the last couple of pages are some jazz articulations. They are suggestions to give the studies a more jazzy feel.

Try to make the slurs smooth, and give a slight accent on the notes at the start of them. Also, try to not to consciously swing the quavers. If you play with the correct accents that should make the studies swing.

These articulations are only suggestions...maybe come up with your own too!

Good luck!

Darren



Copyright © 2017 by Darren Lloyd • All Rights Reserved
Distributed by Lassus Publications (Canada)

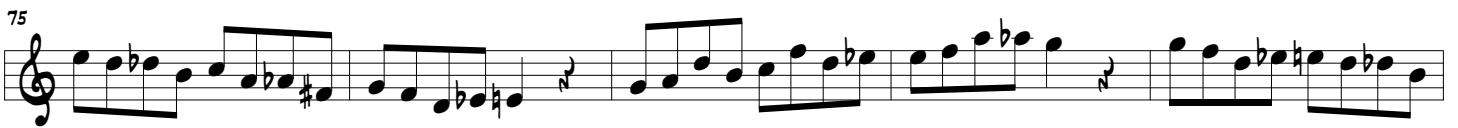
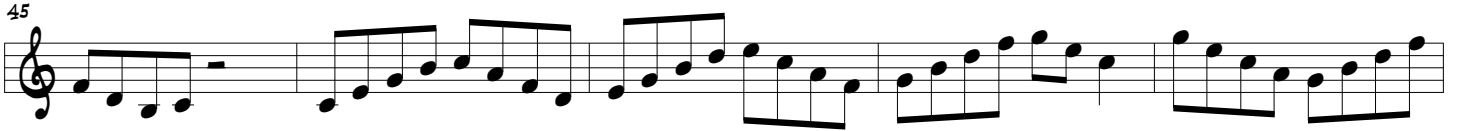
Jazz Scale Studies

(First 8 Keys)

Darren Lloyd

Moderato ♩ = 120





793

Exercise 793 is a single-staff piece in treble clef with a key signature of one flat (B-flat). The melody is written in 4/4 time and consists of 16 measures. It features a mix of eighth and sixteenth notes, often beamed together. Slurs and ties are used to indicate phrasing and note durations across measures.

798

Musical notation for measure 798, featuring a treble clef and a series of eighth notes with beams connecting them.

803

Musical notation for exercise 803, featuring a treble clef and a series of eighth and sixteenth notes with various slurs and ties.

808



813

Musical notation for exercise 813, featuring a treble clef and a series of eighth and sixteenth notes with various accidentals.

818

818

822

Musical notation for exercise 822, featuring a treble clef and a series of eighth and sixteenth notes with various accidentals.

827

827

831

A musical exercise on a single staff with a treble clef. The notation consists of a sequence of eighth and sixteenth notes, many of which are beamed together and connected by slurs, indicating a continuous melodic line. The exercise is numbered 831 in the top left corner.